



# Ultrastructural characterization of *Phakopsora jatrophiicola* pathogen of *Jatropha curcas* in Yucatan, Mexico

## Caracterización ultraestructural de *Phakopsora jatrophiicola* patógeno de *Jatropha curcas* en Yucatán, México

Abril Díaz-Braga<sup>1</sup>, Raul Tapia-Tussell<sup>1</sup>, Tanit Toledano-Thompson<sup>2</sup>, Rodolfo Martín-Mex<sup>1</sup>, Angel Nexticapan-Garcez<sup>1</sup>, Andres Quijano-Ramayo<sup>1</sup>, Daisy Perez-Brito<sup>1</sup>

<sup>1</sup>Laboratorio GeMBio, Centro de Investigación Científica de Yucatán A.C., Calle 43 # 130, Col. Chuburná de Hidalgo, Mérida 97200, Yucatán, México.

<sup>2</sup>Unidad de Energía Renovable, Centro de Investigación Científica de Yucatán A.C., Calle 43 # 130, Col. Chuburná de Hidalgo, Mérida 97200, Yucatán, México

### RESUMEN

El piñón (*Jatropha curcas*) ha sido considerado a nivel mundial como una fuente de aceite, a partir de sus semillas, para la producción de biocombustible. En Yucatán, México, este cultivo ha sido afectado por la roya causada por *Phakopsora jatrophiicola* (syn. *P. arthuriana*), un hongo biotrófico obligado, que se ha convertido una limitación importante en la obtención de los rendimientos esperados. Actualmente, poco se conoce sobre la biología de *P. jatrophiicola*. Dado que no existen estudios previos a nivel de la morfología ultramicroscópica, en este trabajo se realizó el primer estudio de microscopía electrónica de barrido (MEB) de esta especie y un bioensayo en hojas individuales de *J. curcas*, con el fin de probar la infectividad de las esporas. El análisis de MEB reveló uredias errumpentes con 25 a 35 µm de diámetro de poro abierto, que contenían urediniosporas equinuladas de 23 µm largo x 11 µm de ancho. Además, las esporas colectadas de las hojas de piñón, fueron capaces de producir nuevas pústulas después de 13 días de la inoculación en hojas sanas separadas de *J. curcas*. Estos resultados proporcionan las bases para futuras investigaciones de esta interacción hospedero-patógeno, y pueden ser útiles en el desarrollo de nuevos métodos moleculares para el diagnóstico de esta especie.

**PALABRAS CLAVE:** microscopio electrónico de barrido, urediniosporas, roya, piñón.

### ABSTRACT

Physic nut (*Jatropha curcas*) has been considered worldwide as a source of seed oil for the production of biofuel. In Yucatan, Mexico, this crop has been affected by rust caused by *Phakopsora jatrophiicola* (syn. *P. arthuriana*), an obligate biotrophic fungus, which has become a major constraint in obtaining expected yields. Currently, little is known about the biology of *P. jatrophiicola*. Since there are no previous studies at ultramicroscopic morphology level, we conducted the first Scanning electron microscopy (SEM) examination of this species and a bioassay on *J. curcas* detached leaves in order to test the spore infectivity. SEM analysis revealed erumpent uredinia with 25 to 35 µm diameter open pore, containing 23 µm length x 11 µm wide equinulated urediniospores. Moreover, spores harvested from Physic nut leaves were able to produce new pustules after 13 days of inoculation on healthy detached *J. curcas* leaves. These results provide the basis for further researches of this host-pathogen interaction, and may be useful in the development of new molecular methods for diagnostic of this specie.

**KEYWORDS:** scanning electron microscopy, urediniospores, rust, physic nut.

Recibido / Received: 14/12/2015

Aceptado / Accepted: 02/05/2016

Autor para correspondencia / Corresponding author:

Daisy Pérez Brito  
daisypb@cicy.mx

## INTRODUCTION

Rust fungi form an important group of plant pathogens that cause rust diseases in a diverse group of hosts, which include crops and trees of ecological and economic importance. These fungi have complex life cycles and are obligate biotrophs. Because of these features, they are very difficult to study under laboratory conditions. In general, the problems with rust fungi in the field tend to increase with intensive and extensive monoculture, causing serious losses in commercial plantations by interfering with the physiology of the host and thereby reducing productivity (Zizzerini *et al.*, 2005; Twizeyimana and Hartman, 2010; Kobayashi *et al.*, 2011; Johnson, 2012; Helfer, 2014).

The species known as Physic nut (*Jatropha curcas* L.) belongs to the *Euphorbiaceae* family and is a native crop of Mexico and Central America. It has been considered worldwide an important source of seed oil for the production of biofuel; however, this crop faces several phytosanitary problems, among which the effects caused by fungi infections, especially rust, are the major constraint in obtaining expected yields (Anitha and Varaprasad, 2012; Machado and Pereira, 2012).

The agent of Physic nut rust was recorded for first time in 1915 in Puerto Rico, and referred to as *Uredo jatrophicola* Arthur. In 1937, Cummins described the fungus under the name of *Phakopsora jatrophicola* (Arthur) Cummins, which technically refers only to an anamorph. In 1994, a new name for this species was published, *P. arthuriana* (Buriticá and Hennen), but recently it was stated that the current name of this species is *P. jatrophicola* (Index Fungorum, 2015). This fungal species has been reported in every country where *Jatropha curcas* is grown, from southern Texas in the United States of America to Brazil, including the Antilles (Cummins, 1937; Buriticá, 1999; Hennen *et al.*, 2005).

Few studies have been conducted on this species, all of which have focused on the morphological characters of the fungus examined by standard light microscopy (LM), and all of them agree on the size and shape of reproductive structures (Buriticá, 1999; Hennen *et al.*, 2005; Sotão *et al.*, 2006; Vieira *et al.*, 2009; Kobayashi *et al.*, 2011; Nolasco *et al.*, 2013).

One particular advantage of Scanning electron microscopy (SEM) over LM, among others, is that it allows us to study details

of fungal taxonomy, as well as several aspects of morphology such as surface details and fungi parasitism, and to date, has produced a wealth of knowledge on fungi and their interactions (Alves *et al.*, 2013).

Since there are no previous studies at ultramicroscopic morphology level of the reproductive structures of *P. jatrophicola*, in this work we conducted an SEM examination of uredospores, uredia and telium of this species, in order to obtain bi-dimensional images of them and more useful information for further studies on the interaction of *P. jatrophicola* and *J. curcas*. We also developed a bioassay in order to examine the viability and infectivity of *P. jatrophicola* urediniospores after inoculation on *J. curcas* detached leaves.

## MATERIALS AND METHODS

### Sample collection

From March 2013 to January 2015, samples of *J. curcas* leaves with typical symptoms of rust were collected in commercial plantations, in three different municipalities (Tizimin, Merida and Conkal) of Yucatan, Mexico

### Morphological characterization

For the microscopic examination of the fungus, permanent preparations in wax rings in glycerin were made with transversal sections of the structures present in the abaxial surface of the leaves. A morphometric analysis of 33 uredinia, 60 urediniospores, 13 uredinial paraphyses, 33 telia and 23 teliospores, randomly selected, was done with a light microscopy (Zeiss, Axiostar plus) at 40X magnification. The identification of the fungus genus and species was done with the use of specialized identification keys (Buriticá, 1999; Cummins and Hiratsuka, 2003).

### Scanning electron microscopy (SEM) analysis

Selected specimens were also examined by SEM (Jeol, Jsm-6360LV). For this purpose, leaf material with rust fungi was hand cut with a razor blade into small pieces of approximately 5 x 5 mm. The specimens were fixed in 2.5% glutaraldehyde in 0.02 M sodium phosphate buffer (pH 7.1) for 48 h (24 h at room temperature and 24 h at 4 °C). This was followed by six 30 min washes in 0.02 M sodium phosphate buffer at 4 °C. The speci-



mens were then dehydrated in graded ethanol series (30, 40, 50, 60, 70, 85, 95 and 100% v/v, two times for 30 min). For the SEM analysis, the samples were critical point dried in CO<sub>2</sub> after fixation and dehydration, mounted onto carbon stubs and coated with 15 nm gold. SEM analysis was carried out using an acceleration voltage of 20 kV (Alves *et al.*, 2013).

### Inoculation of detached *Jatropha curcas* leaves with *Phakopsora jatrophiicola*

Forty seeds of *J. curcas* were embedded for 24 hours in Procloraz (1 mL/L), after which they were scarified in order to promote germination and placed in trays with moistened sterile cotton at 25 °C, in darkness for 3 days. The Physic nut seedlings obtained were planted in bags with sterile substrate and grown under controlled conditions in a greenhouse in order to obtain healthy plants.

The infectivity of rust spores of *P. jatrophiicola* was assessed using an *in vitro* detached leaf assay (Park *et al.*, 2008) with some modifications which are described below.

Urediniospores were collected from leaves with symptoms of rust using a sterile needle; these spores were re-suspended in deionized water containing 0.01% Tween 20. Spore concentration was determined using a hemacytometer and adjusted to  $1 \times 10^5$  spores/mL of water. Inoculum (200 µL) containing 20 000 spores was applied evenly to the adaxial surfaces of detached *J. curcas* leaves, harvested from greenhouse plants. These leaves had been previously disinfected with sodium hypochlorite 1% for 1 minute, washed three times with deionized water containing 0.01% Tween 20 and finally dried on sterile brown paper with dry air under a laminar flow cabinet. The inoculated leaves were placed adaxial surface up on filter paper soaked with sterile water in petri dishes and incubated at  $20 \pm 2$  °C, with a 12 h photoperiod. Pustule formation was determined by visual inspection daily. High moisture (75%) inside the petri dishes was maintained by adding 4 mL of sterile deionized water every 7 days. Infection rate was determined by the percentage of leaves with visible pustules versus total number of inoculated leaves. Pustule density was defined as the average number of pustules per leaf 13 days after inoculation. This experiment was conducted twice with four replicates. Each replicate consisted of 24 detached *J. curcas* leaves, half of them inoculated with rust

urediniospores and the other half with water containing 0.01% Tween 20. The data from two repeated experiments were combined to calculate the mean pustule densities.

### Germination of urediniospores

The germination percentage of urediniospores from *P. jatrophiicola* was assessed using the methodology reported for *P. pachyrrhizi* by Park *et al.* (2008). With the aid of a sterile needle, spores were collected from leaves with symptoms of rust and placed in microcentrifuge tubes (1 mg/ tube) in 1 mL of deionized water containing 0.01% Tween 20; they were then allowed to germinate at  $20 \pm 2$  °C with a 12-h photoperiod. Spore germination was assessed at 12, 24, 36, 48, 72 and 96 hours, using spore germination rate, which was defined as the percentage of spores germinated. For each assessment, the spore suspension was mixed and three subsamples of 20 µL were removed from the microcentrifuge tubes and examined with a light microscope. The percentage of spores germinated was determined based on the total number of germinated spores versus total number of spores counted from at least 24 different fields of view (at 40X magnification) for each sample. The germination percentage for each time point was the mean from three replicated samples. The means and standard deviations were calculated with the statistical software StatGraphic XVI (StatPoint Technologies Inc., 2010).

## RESULTS

It was observed a high incidence (30 to 70%) of rust in Physic nut commercial plantations located in three different municipalities of Yucatan, Mexico. The highest levels of rust, each year of the study, appeared from November to February, which are the months with lower average temperatures (16 a 23 °C) in Yucatan.

A total of 140 samples of *J. curcas* leaves with typical symptoms of rust were collected, the leaves presented irregular chlorotic halos on the adaxial surface, which later became necrotic, while in the abaxial area, reddish-brown erumpent pustules (uredia) were predominant, although dark brown telios were also observed (Figure 1).

### Morphological characterization

Light microscopy observations showed that uredinia of *P. jatrophiicola* (Figure 2a) were hypophyllous, and occasionally epiphyllous.

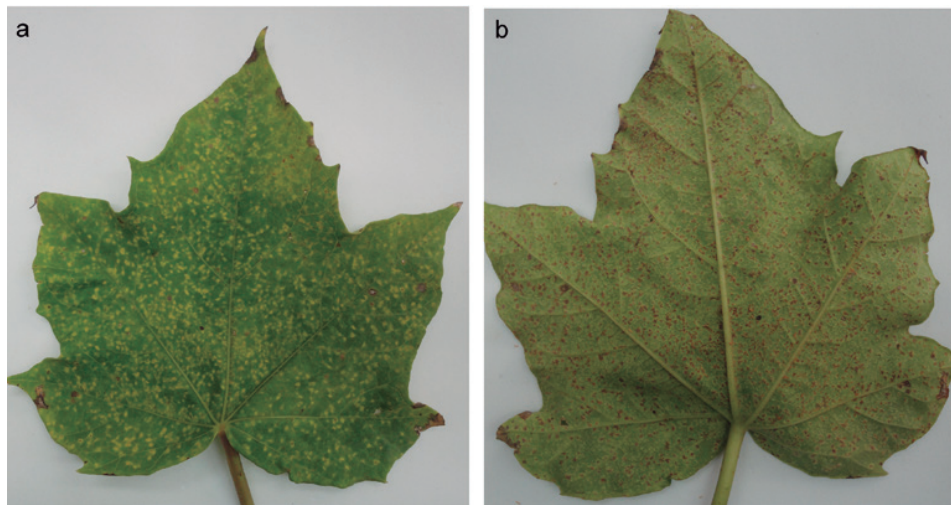


Figure 1. Symptoms of phytic nut rust (*Phakopsora jatrophicola*) in phytic nut (*Jatropha curcas*) leaves. a. Chlorotic halos on adaxial surface of a leaf. b. Rust symptoms on abaxial surface of a leaf.

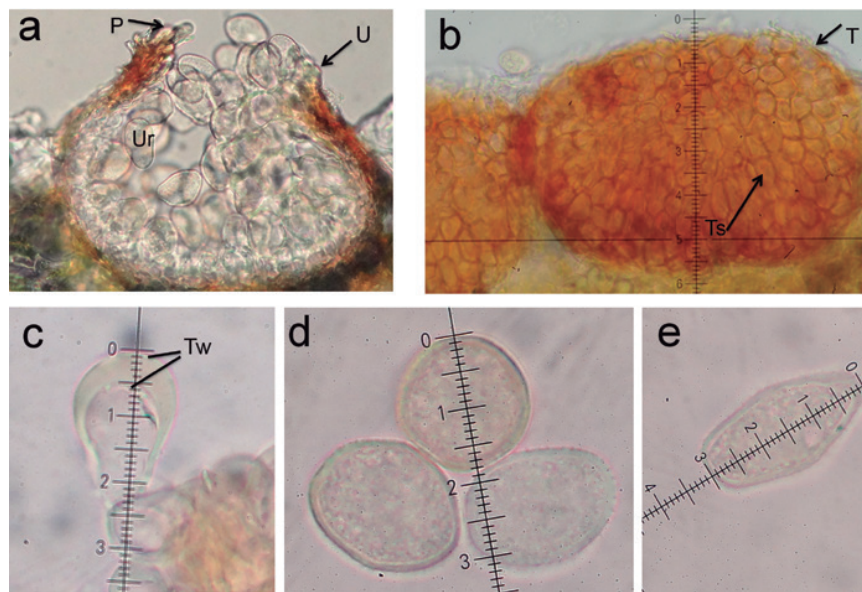


Figure 2. Morphological structures of *Phakopsora jatrophicola* on *Jatropha curcas* observed at Light microscopy at 40X magnification. a. Uredinium (U) subepidermal, erumpent, opening by a pore surrounded by paraphysis (P) and with urediniospores (U) inside. b. Telia (T) subepidermal, not erumpent with teliospores (Ts). c. Incurved, dorsally thick-walled (Tw) paraphysis. d. Urediniospores appear sessile, obovoid. e. Teliospore.

They were in small groups on leaf spots framed by leaf veins, brownish, ellipsoid, subepidermal, erumpent, and opening by a pore. Telia (Figure 2b) were hypophyllous, subepidermal, not erumpent, yellowish to brownish, consisting of crusts of laterally adherent teliospores, 6-10 spore layers deep, covered by the epidermis. There were numerous peripheral, incurved, claviform, not septate, unusually dorsally thick-walled (5  $\mu$ m) paraphyses (Figure 2c) surmounting peridial tissue, that project outside the host, with color-

less to yellowish walls. Urediniospores (Figure 2d) were mostly obovoid, ranged from 15 to 20  $\mu$ m wide, sessiles, 0.5-1  $\mu$ m uniformly thick echinulate wall, colorless to brownish; and the germ pores were not visible. Teliospores (Figure 2e) were sessile, range from 17 to 30  $\mu$ m length, irregularly arranged, 1-celled, and ellipsoid to polygonal, the wall was usually brown or brownish. The data of morphological characteristics of *P. jatrophicola* isolated in Yucatan is presented in Table 1.

Table 1. Morphological characteristics of *Phakopsora jatrophiicola* isolated from *Jatropha curcas* in Yucatan

Fungal Structure	Length		Width	
	Range ( $\mu\text{m}$ )	Mean $\pm$ S.D ( $\mu\text{m}$ )	Range ( $\mu\text{m}$ )	Mean $\pm$ S.D ( $\mu\text{m}$ )
Uredinium	105-187.5	133.1 $\pm$ 17.4	130-225	163.3 $\pm$ 22.1
Uredinospore	19-26	23.1 $\pm$ 1.8	15-20	16.9 $\pm$ 1.2
Paraphysis	20-35	26.07 $\pm$ 4.5	7.5-15	12.2 $\pm$ 2.7
Telium	100-187.5	149.6 $\pm$ 19.9	117.5-240	171.04 $\pm$ 35.9
Teliospore	17-30	21.6 $\pm$ 2.5	10-16	11.6 $\pm$ 1.2

### Scanning electron microscopy analysis

The detail of uredinia erumpent, with an open pore (25 to 35  $\mu\text{m}$  of diameter) containing numerous uredinospores and peripheral paraphyses surmounting peridial tissue were observed (Figure 3a). Uredinia erumpent associated with telium were also observed embedded in *J. curcas* tissue, telia were subepidermal, not erumpent, consisting of crusts of laterally adherent teliospores, closely around the uredinia (Figure 3b). SEM images of *P. jatrophiicola* also showed the surface sculpturing of spores to be echinulate (Figure 3c and Figure 3d). The leaf tissue with several erumpent uredinia is presented in Figure 3e.

### *Phakopsora jatrophiicola* spore infectivity in a detached leaf assay

Detached *Jatropha* leaves were able to remain green up to 25 days after incubation under the detached-leaf assay conditions. Spores harvested from Physic nut leaves with rust symptoms retained their infectivity and were able to produce new pustules when inoculated onto healthy detached *J. curcas* leaves. Pustules were observed 13 days after inoculation on 50% of the inoculated leaves. Infectivity was retained up to 30 days after inoculation. In addition, pustule density in inoculated leaves was recorded at 14 days after inoculation (Figure 4), with an average of 181.16  $\pm$  19.5 pustules/leaf observed on the abaxial side. An average of 15.5  $\pm$  2.3 lesions/leaf and 12.63  $\pm$  2.4 pustules/lesion were also recorded.

### Germination of *Phakopsora jatrophiicola* spores assay

*Phakopsora jatrophiicola* rust spores were recovered from *J. curcas* leaves collected in commercial plantations. The highest

number of spores seen in a hemacytometer field was 43 and the lowest number was 13, with an average of 20.45  $\pm$  6.4 spores per hemacytometer field.

The high germination value was obtained at 96 hours (18%), but this value was not different from those obtained in the remaining measurements (15% at 12 and 24 h, and 17% at 36, 48 and 72 h). All germinated uredinospores showed the germ tube and the appressorium (Figure 5).

## DISCUSSION

In this study, we found that the *P. jatrophiicola* specimens obtained from different commercial plantations of Physic nut, when examined under light microscope, showed reproductive structures and ranges of spore dimensions similar to those described in previous studies of *P. jatrophiicola* in *J. curcas* (Cummins, 1937; Viégas, 1945).

Additionally, the present study also examined the morphological features of this rust via scanning electron microscopy (SEM) for the first time, and we are able to provide clear evidence of a cross section of a *J. curcas* leaf with uredia and their peripheral paraphyses and uredinospores, where the echinulate surface sculpture of uredinospores can be observed in detail. Furthermore, the SEM images showed the telium and teliospores on a *J. curcas* leaf and a cross section of the leaf with the uredium and telium together.

Until recently, Physic nut was used only as a living fence, and intensive cultivation is relatively new, because of this, little information is available on crop management. In order to establish adequate rust disease control, phytopathologists need to understand the pathogen biology, host-pathogen interactions,

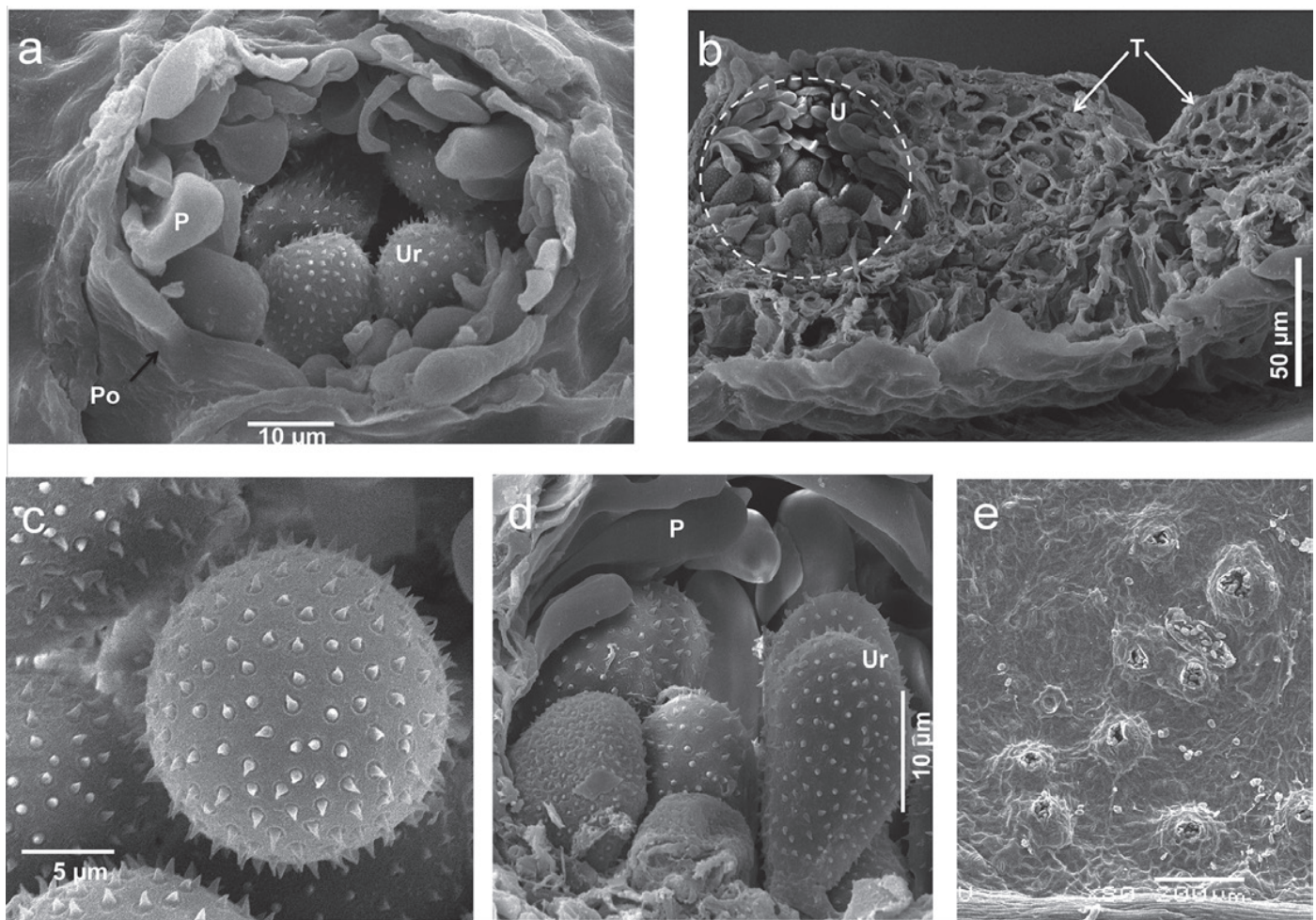


Figure 3. Scanning electron micrographs of *Phakopsora jatrophicola* inside plant tissue. a. Cross section of *Jatropha curcas* leaf with uredium of the rust fungus *P. jatrophicola*, detail of a pore (Po) opening with peripheral paraphyses (P) and urediniospores (Ur). b. Cross section of leaf with uredium (U) and telio (T) with teliospores. c. Top view of echinulate surface sculpture of urediniospores. d. Cross section of uredium with Paraphyses (P) and lateral view of urediniospores (Ur). e. Top view of erumpent uredinium in a *Jatropha curcas* leaf.

and environmental conditions that favor the establishment and development of rust. Additional research, similar to the present study, has been conducted in other pathogens of *Phakopsora* genus in order to obtain this valuable information (Park *et al.*, 2008; Twizeyimana and Hartman, 2010). It has been reported that the natural defoliation of *J. curcas* leaves can be confused with the symptoms of rust disease due to the fact that, when the infection is severe, *P. jatrophicola* causes complete defoliation in *J. curcas* plants (Vieira *et al.*, 2009). The behavior of rust disease in many Physic nut varieties cultivated in Yucatan in order to obtain biofuel was similar to that reported. Nolasco *et al.* (2013) reported the presence of *P.*

*arthuriana* in a noncommercial field (120 plants) in Puebla, Mexico and pointed out that the phytosanitary and economic importance of leaf rust in *J. curcas* in Mexico lies in the high levels of incidence and severity which can occur when environmental conditions are favorable, such as humid temperate climate with rainfall throughout the year; and they also hypothesized that in *J. curcas* commercial orchards, located in places where a sub-humid warm climate prevails with summer rains (such as the Yucatan peninsula), it is possible that this pathogen has not become established. Our results and observations made in the Physic nut commercial fields of the Yucatan Peninsula contradict this assumption, given that 30 to

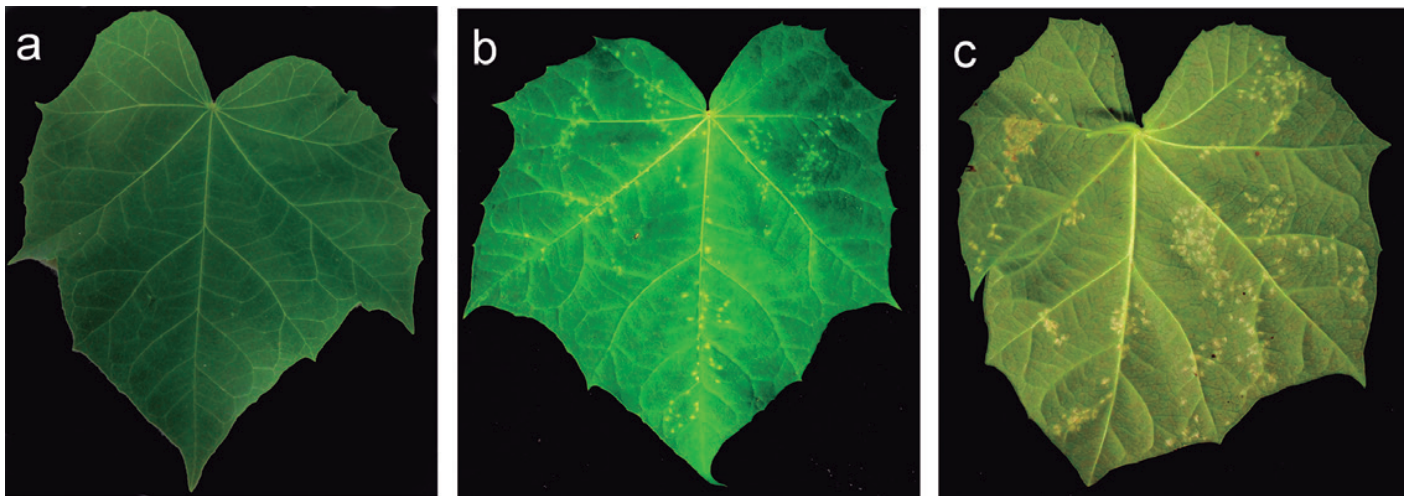


Figure 4. Evaluation of *Phakopsora jatrophicola* urediniospore infectivity, using a detached-leaf assay. a. Healthy leaf of *Jatropha curcas* before inoculation. b. Leaf adaxial side 13 days after inoculation. c. Leaf abaxial side 13 days after inoculation.

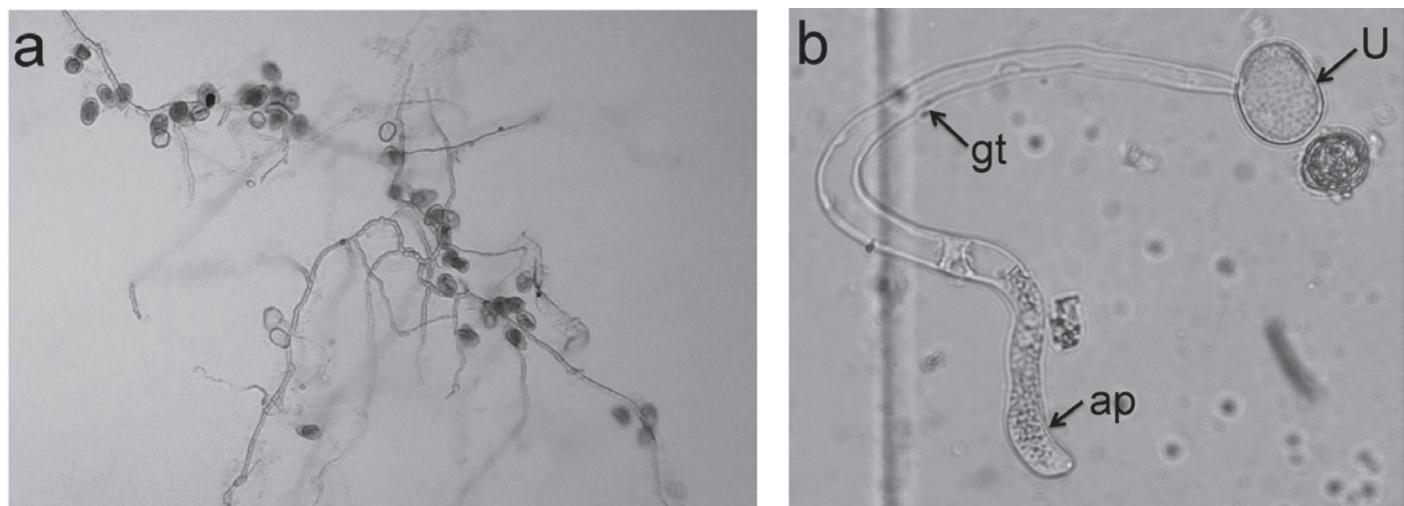


Figure 5. Germination of *Phakopsora jatrophicola* spores recovered from *Jatropha curcas* leaves. Spore germination was examined with a light microscope at 40X magnification. a. Germinated spores after 12 h of incubation. b. Urediniospores (U) with germ tube (gt) and appressorium (ap).

70% of the 3000 hectares cultivated in this region of Mexico are affected by rust.

*Phakopsora jatrophicola* is an obligate pathogen; therefore it is very difficult to maintain the specimens in order to work, for example, on the genetic improvement for rust resistance of Physic nut, through artificial inoculations. In this sense, the possibility of having viable spores for a considerable period of time it is very important. The detached-leaf assay which has been used in culturing rust pathogens (Park *et al.*, 2008; Twizeyimana and Hartman, 2010; Chang *et al.*, 2014) provides a

method that overcomes the time and space limitations of greenhouse and field evaluations. As Park *et al.* (2008) pointed out, a critical aspect in using the detached-leaf assay is to maintain healthy leaf tissue for the period of time that is required for disease development, and in this case, also for *P. jatrophicola* reproduction. This test proved the usefulness of this technique, not only for determining spore infectivity in a short time but also in maintaining live and other fungi contamination-free *P. jatrophicola* spores under *in vitro* conditions. Since it has been reported that rust may be parasitized by other pathogens (Ward

*et al.*, 2011; Nolasco *et al.*, 2013), this approach would also enable the sequencing of different genic regions in order to develop specific primers for the molecular diagnostic for this species.

Park *et al.* (2008) found that the average germination rate of urediniospores of *P. pachyrhizi*, freshly harvested from soybean field, varies greatly (from 93% to 15%), depending on the time of harvest and the microenvironment to which the spores were exposed before harvest. The *P. jatrophicola* spores used in this study to measure germination rate had low germination percentage under the conditions established, these values match with the lower range reported in other works. However, there are no previous reports on germination percentages for this species. This study is the basis for further research to evaluate different ranges of temperature and obtain a better understanding of the biology of this pathogen.

Before this study there were no reports about this technique neither for *P. jatrophicola* nor for *Jatropha curcas*. To the best of our knowledge it has not been published any work on molecular studies in this host-pathogen-relationship. The findings of this study provide new information on the morphology and biology of this host-pathogen interaction, and will serve as the basis for further studies on Physic nut improvement for disease resistance.

## ACKNOWLEDGEMENTS

Authors wish to thank to José Fernely Aguilar for his help with the art work. The experiments conducted in this study comply with current laws of Mexico

## REFERENCES

- Alves, E., G.C. Lucas, E.A. Pozza, A.M. Carvalho, 2013. Scanning electron microscopy for fungal sample examination. In: Gupta V.K., M.G. Tuohy (eds.), *Laboratory Protocols in Fungal Biology: Current Methods in Fungal Biology*. Springer, Heidelberg, pp. 133-150.
- Anitha, K., K.S., Varaprasad, 2012. *Jatropha* pests and diseases, an overview. In: Carels, N., M. Sujatha, B. Bahadur (eds.), *Jatropha, Challenges for a New Energy Crop*. Springer, New York, pp. 175-218.
- Buriticá, C.P., 1999. La familia Phakopsoraceae en el Neotrópico III, géneros: *Batistopsora* y *Phakopsora*. *Revista de la Academia Colombiana de Ciencias Exactas, Físicas y Naturales* 23: 271-305.
- Chang, H.X., L.A. Miller, G.L. Hartman, 2014. Melanin-independent accumulation of turgor pressure in appressoria of *Phakopsora pachyrhizi*. *Phytopathology* 104: 977-984.
- Cummins, G.B., 1937. Descriptions of tropical rusts. *Bulletin of the Torrey Botanical Club* 64: 39-44.
- Cummins, G.B., Y. Hiratsuka, 2003. *Illustrated genera of rust fungi*. 3<sup>rd</sup> ed. American Phytopathological Society, St. Paul, MN.
- Hennen, J.F., M.B. Figueiredo, A.A. Carvalho, P.G. Hennen, 2005. Catalogue of the species of plant rust fungi (Uredinales) of Brazil [http://aplicacoes.jbrj.gov.br/publica/livros\\_pdf/catalogue.pdf](http://aplicacoes.jbrj.gov.br/publica/livros_pdf/catalogue.pdf). Accessed 12 September, 2014.
- Helfer, S., 2014. Rust fungi and global change. *New Phytologist* 201: 770-780.
- Index Fungorum (2015) *Phakopsora jatrophicola*. <http://www.indexfungorum.org/names/NamesRecord.asp?RecordID=302789>. Accessed 22 June, 2015.
- Johnson, D.A., 2012. Stability of slow-rusting resistance to *Puccinia asparagi* and managing rust in asparagus. *Plant Disease* 96: 997-1000.
- Kobayashi, L., R.A. Da Silva, A.G. Santanella, 2011. Ocorrência de ferrugem (*Phakopsora jatrophicola*) do pinhão manso em Mato Grosso. *Revista de Ciências Agro-Ambientais* 9: 307-312.
- Machado, A.R., O.L. Pereira, 2012. Major diseases of the biofuel plant, Physic nut (*Jatropha curcas*). In: Fang, Z. (ed.), *Biodiesel-feeds-tocks, production and applications*. InTech, pp. 59-75.
- Nolasco, G.V., E.V. Ayala, P.J.M. Tovar, L.E.G. Ríos, C.H.G. Calyecac, R.A. Miranda, 2013. Primer reporte de *Phakopsora jatrophicola* en *Jatropha curcas* en México. *Revista Mexicana de Fitopatología* 31: 70-73.
- Park, S., Z.Y. Chen, A.K. Chanda, R.W. Schneider, C.A. Hollier, 2008. Viability of *Phakopsora pachyrhizi* urediniospores under simulated southern Louisiana winter temperature conditions. *Plant Disease* 92: 1456-1462.
- Sotão, H.M.P., I.F. De França, J.F. Hennen, 2006. Fungos das famílias *Phakopsoraceae* e *Uropyxidaceae* (Uredinales) da floresta nacional de Caxiuanã, Pará, Brasil. *Hoehnea* 33: 407-417.
- Twizeyimana, M., G.L. Hartman, 2010. Culturing *Phakopsora pachyrhizi* on detached leaves and urediniospore survival at different temperatures and relative humidities. *Plant Disease* 94: 1453-1460.
- Viégas, A.P., 1945. Alguns fungos do Brasil IV. Uredinales. *Bragantia* 5: 1-144.
- Vieira, J.R.J., C.F. De Freitas, R.R. Barros, A.R. Rostand, A.L. Marcolan, M.L.G. Oliveira, N.R. Dantas, D.S. Da Silva, 2009. Ocorrência da ferrugem (*Phakopsora jatrophicola*) em pinhão manso (*Jatropha curcas* L.) no Estado de Rondônia. *Embrapa Rondônia* 341: 1-4.
- Ward, N.A., R.W. Schneider, M.C. Aime, 2011. Colonization of soybean rust sori by *Simplicillium lanosoniveum*. *Fungal Ecology* 4: 303-308.
- Zizzerini, A., L. Tosi, A.M. Mondjana, 2005. Occurrence of *Puccinia helianthi* races on sunflower in Mozambique. *Journal of Phytopathology* 153: 733-735.